

- LAND CORNER HISTORY NOTES -

9048	FND. 1" PIPE 0.5 FEET DEEP FILED BY BRYAN COON P.L.S. 1276 OCTOBER 3, 1995. CHECKED & USED MONUMENT FND. ON THIS SURVEY.
9049	FND. 1/2" PIPE 0.5 FEET DEEP SET BY UNKNOWN PARTIES WHICH FITS S.W.O. 2374(6) FIELD NOTES. CHECKED & USED MONUMENT FND. ON THIS SURVEY.
9050	FND. 1/2" PIPE 0.5 FEET DEEP SET BY UNKNOWN PARTIES WHICH FITS REFERENCES ON C.C.R. FILED BY CURTIS HALE P.L.S. 1084 DECEMBER 26, 1996. MONUMENT FND. ALSO FITS S.W.O. 2374(6) CHECKED & USED MONUMENT FND. ON THIS SURVEY.
9067	FND. NO.3 REBAR 0.5 FEET DEEP FILED BY BRYAN COON P.L.S. 1276 SEPTEMBER 27, 1995. CHECKED & USED MONUMENT FND. ON THIS SURVEY.
9069	FND. NO.4 REBAR 1.5 FEET DEEP SET BY UNKNOWN PARTIES. CHECKED & USED MONUMENT FND. ON THIS SURVEY.
9086	FND. NO.3 REBAR 0.5 FEET DEEP FILED BY BRYAN COON P.L.S. 1276 SEPTEMBER 27, 1995. CHECKED & USED MONUMENT FND. ON THIS SURVEY.
9087	FND. NO.3 REBAR 0.5 FEET DEEP FILED BY RAYMOND PRESCOTT IV P.L.S. 1311 DECEMBER 7, 1989. CHECKED & USED MONUMENT FND. ON THIS SURVEY.
9088	FND. P.K. NAIL FLUSH WHICH FITS REFERENCES ON C.C.R. FILED BY RAYMOND PRESCOTT IV P.L.S. 1311 DECEMBER 7, 1989. REPLACED P.K. FOUND WITH NO.4 REBAR FLUSH AND PLACED A YELLOW PLASTIC CAP STAMPED "GUNNING SURVEYING" ON MONUMENT SET. CHECKED & USED POSITION OF MONUMENT FND. ON THIS SURVEY.

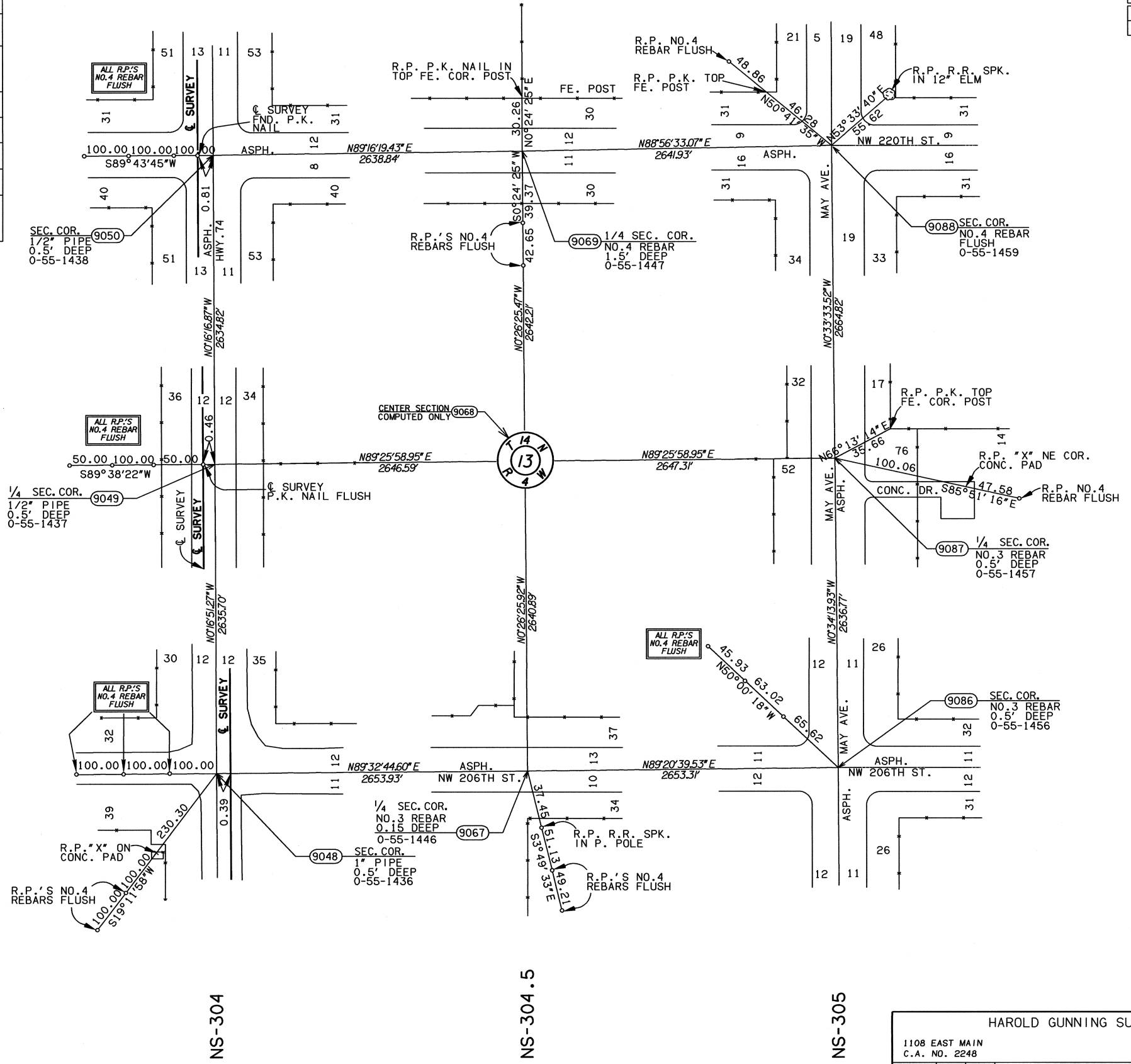
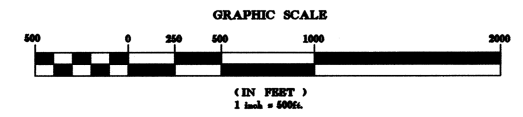
OKLAHOMA DEPARTMENT OF TRANSPORTATION						
FED. ROAD DIST. NO.	STATE	PROJ. NO.	FISCAL YEAR	SHEET NO.	TOTAL SHEETS	
6	OKLA.					
DESCRIPTION				REVISIONS		DATE

EW-91

EW-91.5

EW-92

Angle of Variance
At Pt. No. 9068
X = 2094582.8066
Y = 251261.0922
Lat. = 34°01'22.72"
Long. = 97°35'04.53"
θ = 00°14'08.9"



HAROLD GUNNING SURVEYING			
1108 EAST MAIN		CORDELL, OKLAHOMA 73632	
C.A. NO. 2248		EXPIRATION DATE: 6-30-2005	
PLS	GHC	OKLAHOMA DEPARTMENT OF TRANSPORTATION SURVEY DIVISION SURVEY DATA SHEET SHEET 38 OF 43 SWO 3868 (1) PROJECT NO. 14964(08) SHEET NO. S21	
DRAWN	TRK		
CHECKED			
APPROVED			
CREW			